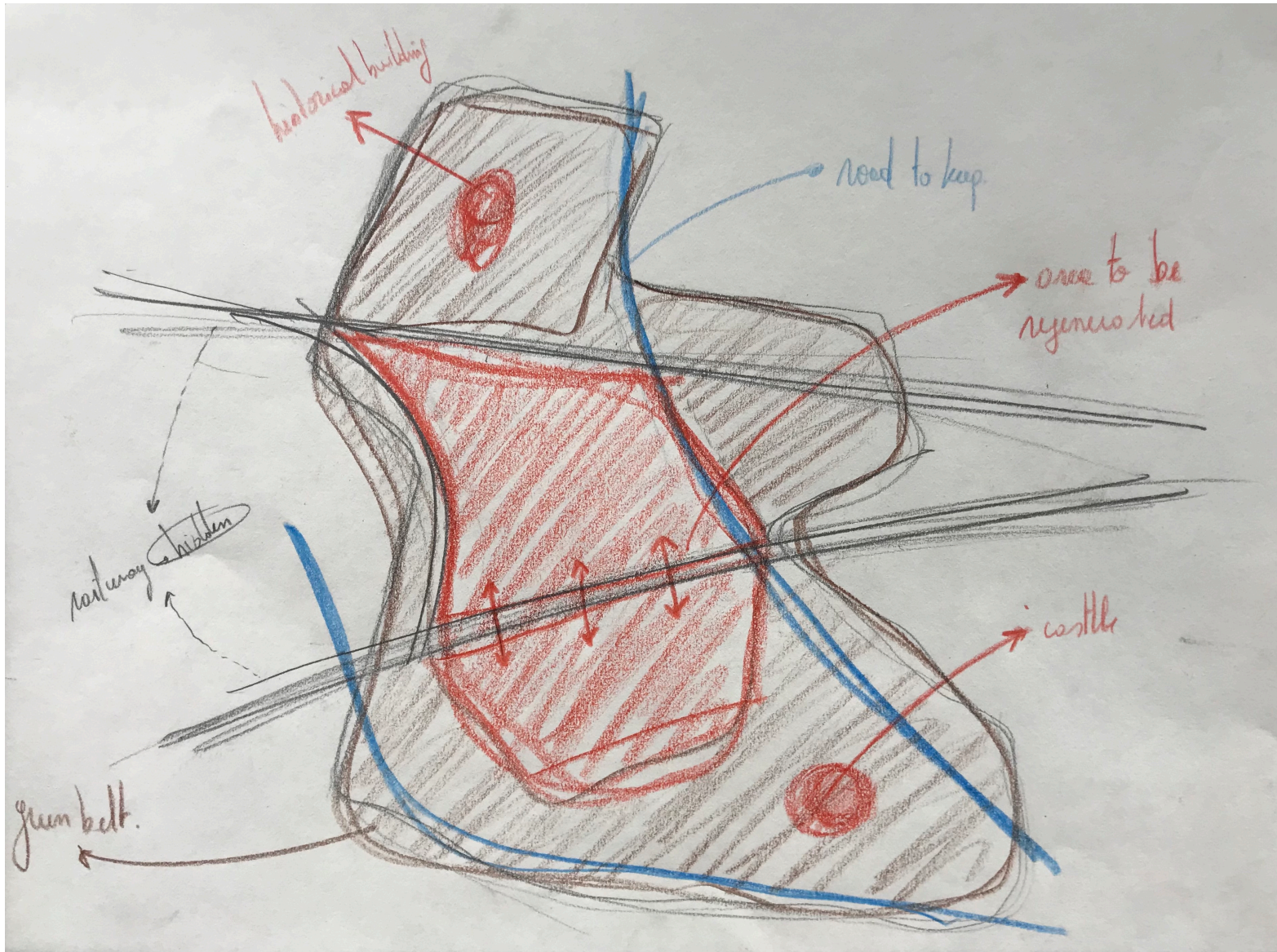
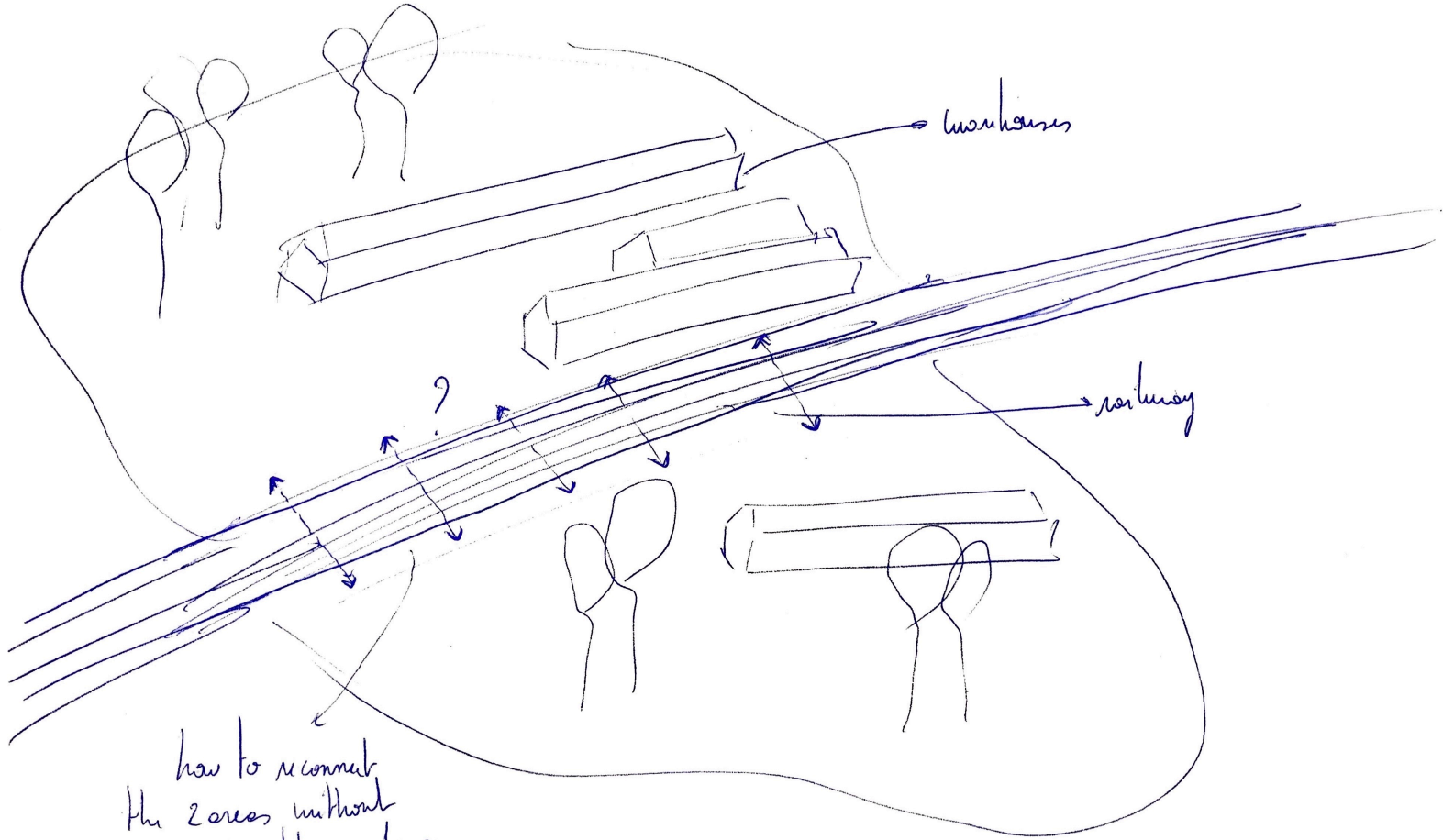


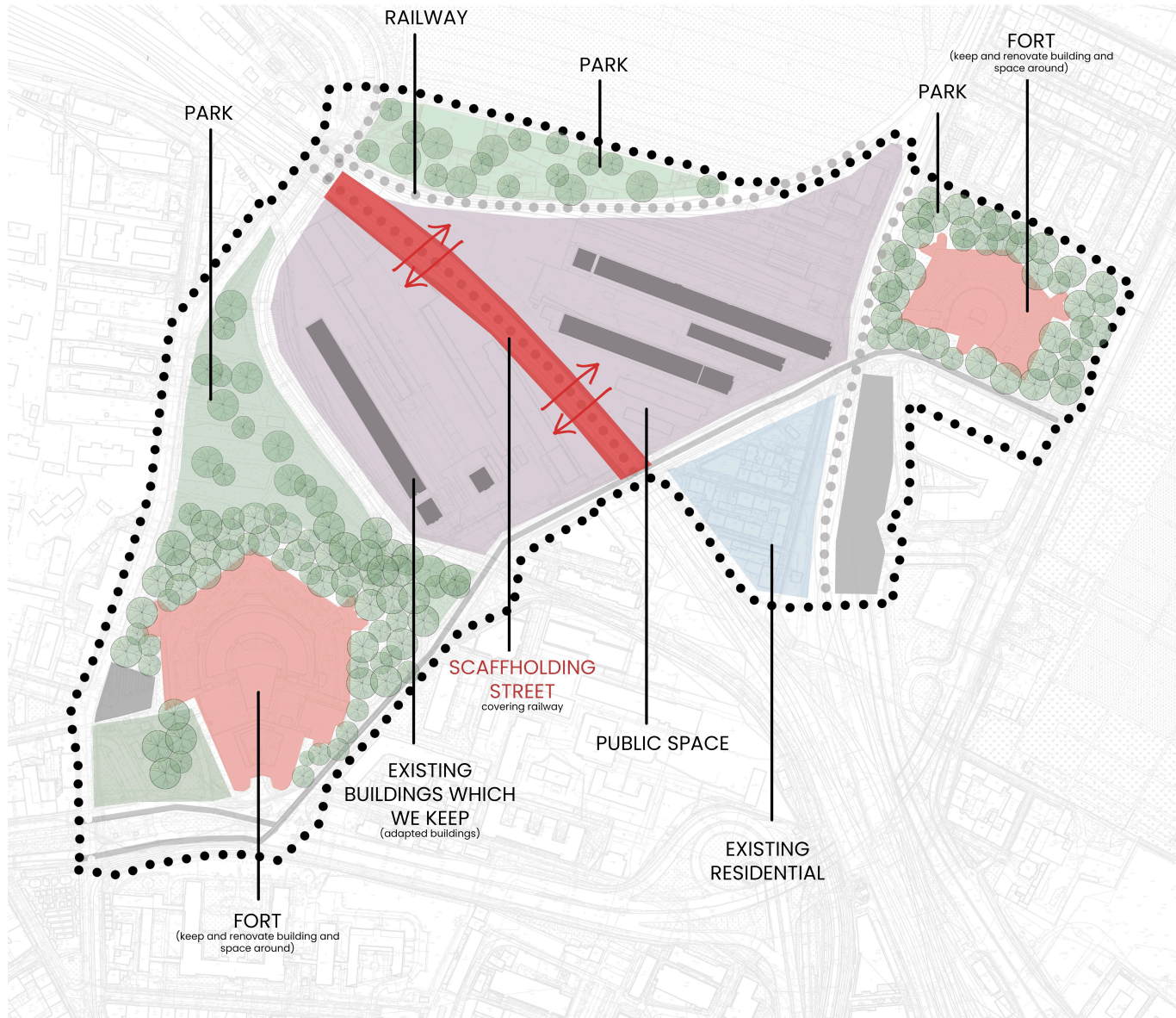
Evolving scaffolding

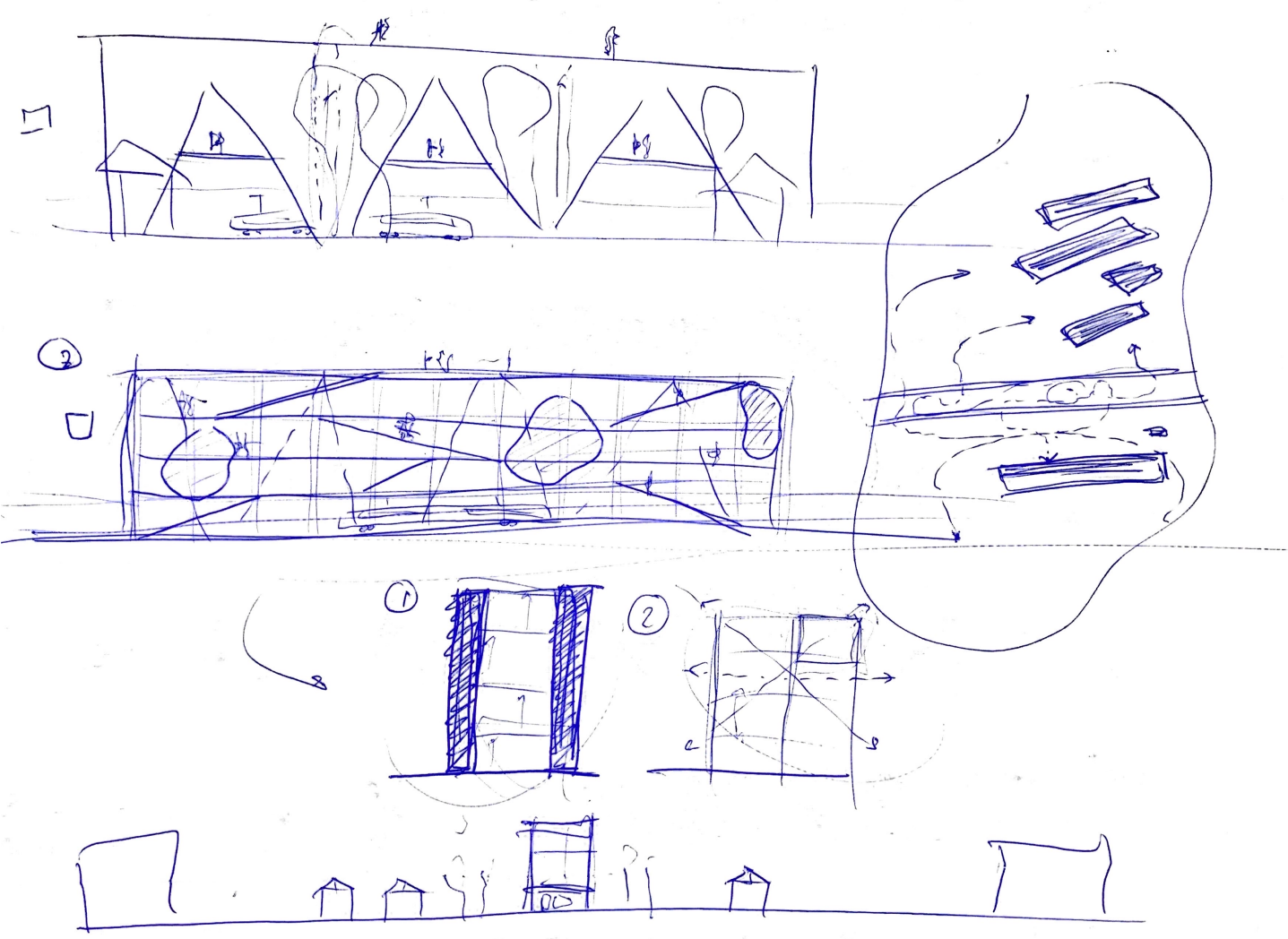
Gaultier Arnould, Maria Jarkiewicz, Aleksandra Sajdera, Agnieszka Plonka, Seleem Gaber



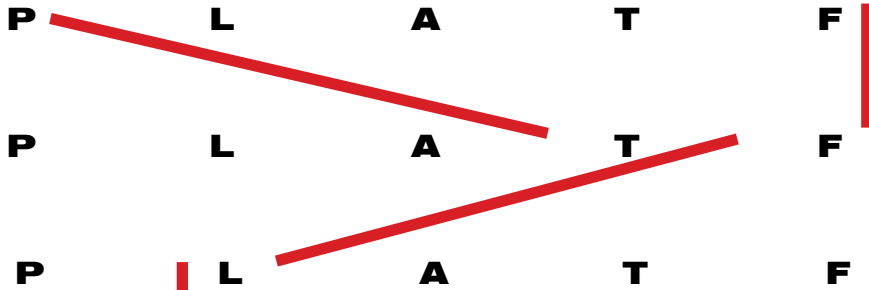


how to reconnect
the 2 areas without
moving the railway





VERTICAL CIRCULATION



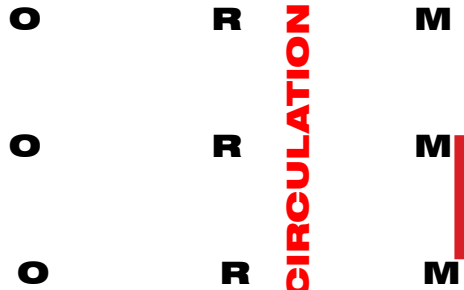
P L A T F O R M

**TRAINS
TRAINS
TRAINS
TRAINS**

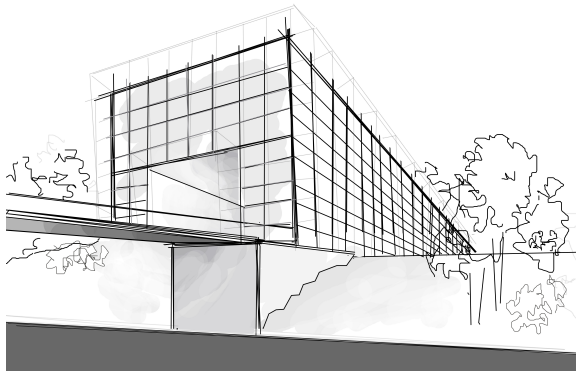
**TRAINS
TRAINS
TRAINS
TRAINS**

**TRAINS
TRAINS
TRAINS
TRAINS**

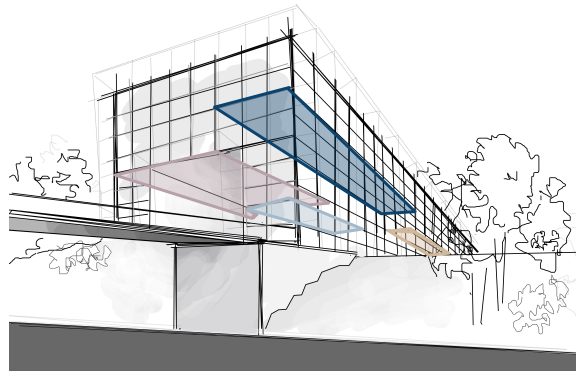
P L A T F O R M



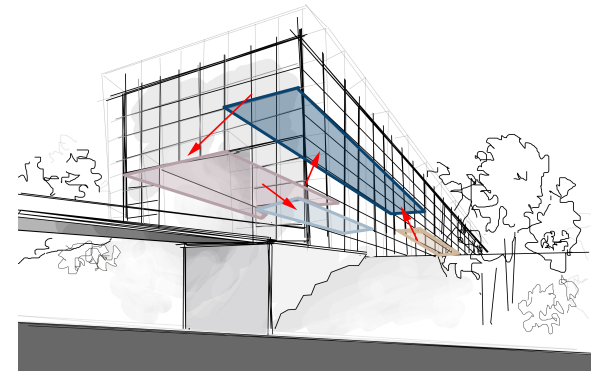
VERTICAL CIRCULATION



The structure



Levels



Connections

